

# Emma's



129-131 Streatham High Road

, London, SW16 1HJ

£1,650 Per Calendar Month



Beautiful, two bedroom (one double, one single bedroom), first floor flat with large windows, spacious living space, and neutral modern decor, fixtures and fittings.



Beautiful, two bedroom flat with neutral modern decor, fixtures and fittings. The flat, which is on the first floor, has one large double bedroom and a second, smaller, single bedroom perfect for use as a home office, children's bedroom or walk-in wardrobe. The flat has wood-laminate floors and high ceilings throughout.

**Living room kitchen 288 (87.78m)**

The spacious living-room-kitchen looks over the High Road bathing the room in natural light. A modern kitchen comes equipped with conveniences such as washing machine, fridge-freezer, electric oven and gas hob.

**Master bedroom 122 (37.19m)**

The flat's master bedroom features faces the back of Streatham High Road, sheltering it from road noise. The rooms is light and airy with ample floor space, built in wardrobes and high ceilings.

**Bedroom 2 67 (20.42m)**

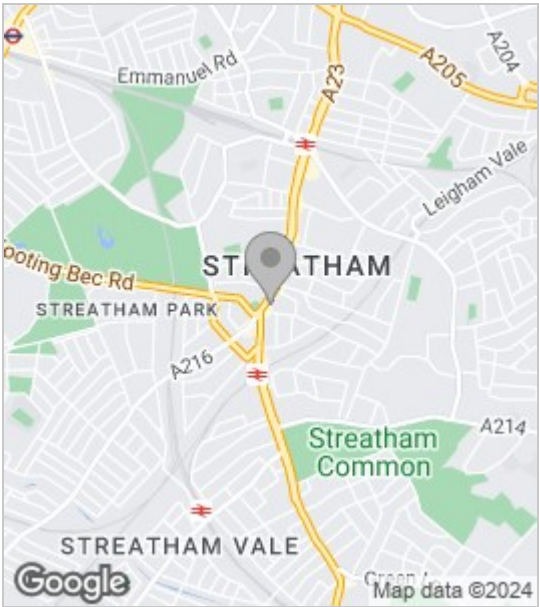
The smaller second bedroom also faces the rear of the building. This room is perfect for use as a home office, walk in wardrobe, or child's bedroom.

**Bathroom 43 (13.11m)**

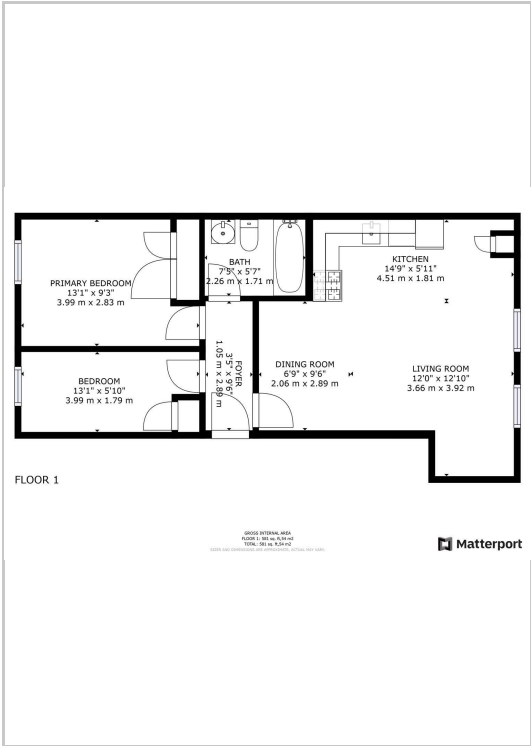
A separate bathroom containing all white fittings including a shower-bath.

Located moments from Streatham Station the flat benefits from excellent transport connections as well as a desirable and vibrant local neighbourhood with local amenities. The flat is also within easy walking distance of the beautiful Tooting Bec Common.

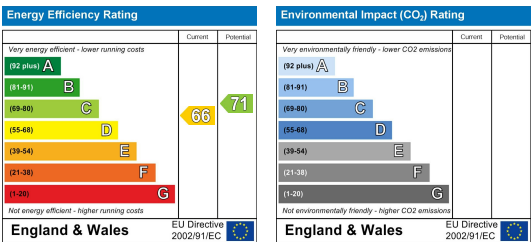
Area Map



Floor Plans



Energy Efficiency Graph



These particulars, whilst believed to be accurate are set out as a general outline only for guidance and do not constitute any part of an offer or contract. Intending purchasers should not rely on them as statements of representation of fact, but must satisfy themselves by inspection or otherwise as to their accuracy. No person in this firms employment has the authority to make or give any representation or warranty in respect of the property.

68 Streatham Hill, London, SW2 4RD  
Tel: 0208 677 6608 ~ Email: mail@emmasestateagents.co.uk  
VAT No: 248 9798 28 ~ Company Registered in England and Wales No. 10219095

